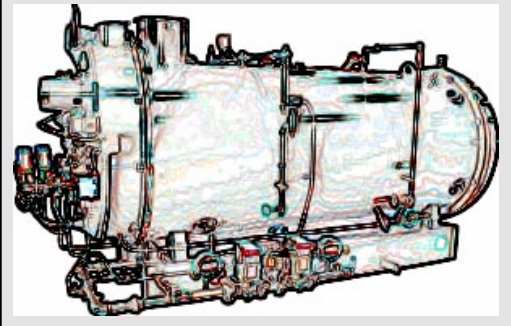


# Plibrico Company Boiler Application Guide

## Fire Tube Boilers



Rear Door

### Rear Combustion Door & Target Wall

*Normal Service*

Plibrico Super F AB

Plicast Tuff Mix

*High Duty Service*

Plibrico 60 AB

Plicast KL 3000

*Severe Service*

Plicast HyMOR 3100



Burner Cone



### Burner Cone & Combustion Ring

*Normal Service*

Plibrico Super F AB

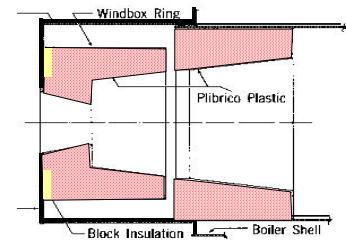
*High Duty Service*

Plibrico 60 AB

*Severe Service*

Plibrico 60 AB

Plibrico 85S Sp



### Baffles

*Normal Service*

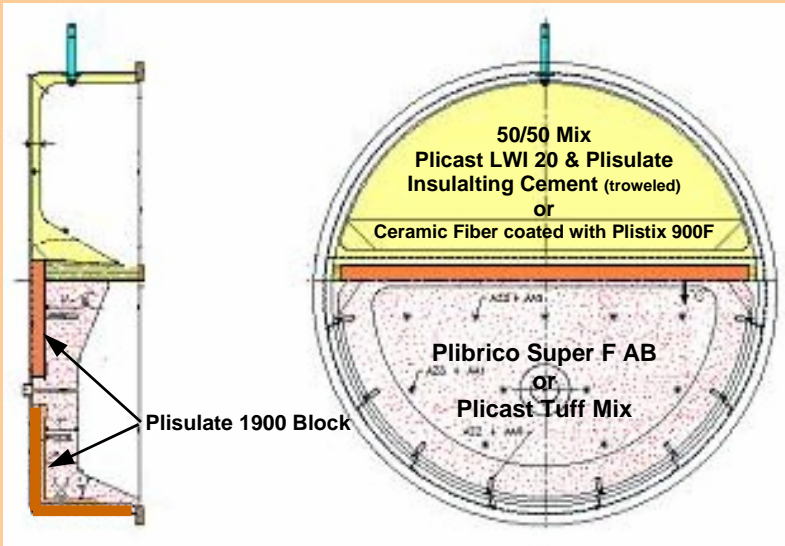
Plicast Baffle Mix

*High Duty Service*

Plicast Tuff Mix

### Application Note

#### Plibrico Package Fire Tube Boiler Monolithic Rear Door



**Plibrico Company LLC**

1010 North Hooker Street  
Chicago, Illinois 60622

Tel: 312-337-9000

Fax: 312-337-9003

[www.plibrico-usa.com](http://www.plibrico-usa.com)

This application guide is intended for general information only. Please consult Plibrico Company or your local Plibrico Representative for specific application assistance and product recommendations.